



December 16, 2022

Atlas Project No.: Z003001358

**Darren Hamrick, P.E.**

Team Leader / Civil Engineering Division  
Sain Associates, Inc.  
Two Perimeter Park South, Suite 500 East  
Birmingham, AL 35242  
Office: 205.410.8666  
Email: [dhamrick@sain.com](mailto:dhamrick@sain.com)

**SUBJECT: Limited Subsurface Exploration  
Project Bear - Whitehorse Road Project  
Jasper, Walker County, Alabama 35501  
Atlas Project Number: Z003001358**

Dear Mr. Hamrick:

Atlas Technical Consultants LLC (Atlas) has completed the authorized Limited Subsurface Exploration for the subject site. This work was conducted in accordance with the agreement between Atlas and Sain Associates, Inc. (the “client”), which is detailed in Atlas Proposal No. 22-15057, dated November 29, 2022, and Sain Associates Consultant Contract for Services (Project Number 170288), dated December 8, 2022.

The purpose of our work was to evaluate near surface conditions within the subject project site as those relate to approximate depth of rock encountered. On December 12, 2022, and December 13, 2022, Atlas oversaw the auger drilling at thirty (30) locations to planned depths of 10 feet below the existing ground surface. Due to subsurface conditions which caused auger refusal to drilling operations, numerous borings were not drilled to planned depths. Figure 1 on the next page shows the approximate locations of these auger borings.

Table 1 below summarizes the borings depths encountered during the drilling operations.

**Table 1 – Boring Depths**

Boring No.	Boring Depth (ft)	Comments
B-1	9.0	Boring offset to avoid steep slope conditions and soft soils.
B-2	10.0	Boring offset to avoid riprap-lined ditch and steep slope conditions.
B-3	10.0	Boring offset to avoid steep slope conditions and soft soils.
B-4	10.0	
B-5	10.0	
B-6	10.0	
B-7	10.0	
B-8	10.0	
B-9	10.0	
B-10	10.0	

Boring No.	Boring Depth (ft)	Comments
B-11	3.5	Auger refusal.
B-12	2.5	Auger refusal.
B-13	1.0	Auger refusal.
B-14	2.0	Auger refusal.
B-15	10.0	
B-16	10.0	
B-17	5.5	Auger refusal.
B-18	3.0	Auger refusal.
B-19	0.0	Auger refusal. Rock at surface.
B-20	10.0	
B-21	10.0	
B-22	7.0	Auger refusal.
B-23	10.0	
B-24	7.0	Auger refusal.
B-25	2.5	Auger refusal.
B-26	10.0	
B-27	10.0	
B-28	10.0	
B-29	10.0	
B-30	6.5	Auger refusal.

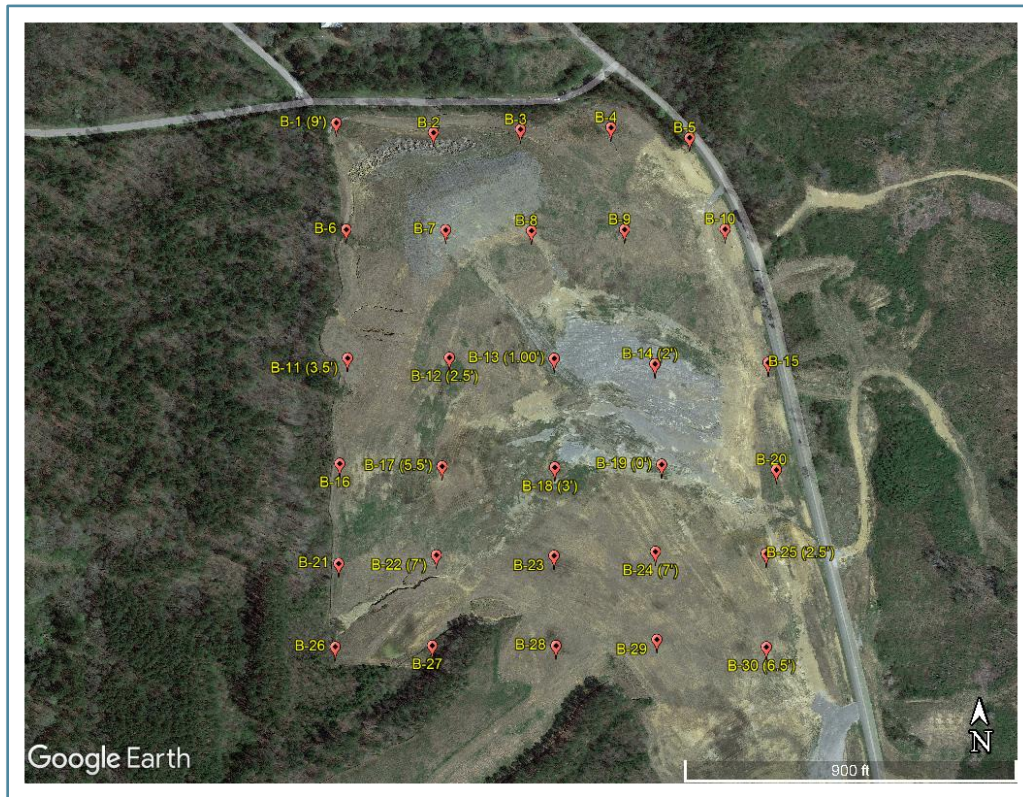


Figure 1. Boring Location Plan (Source: Google Earth)



Atlas appreciates this opportunity to provide these services and looks forward to working with you on future projects. Please contact us if you have any questions or require additional information.

Respectfully submitted,

**ATLAS TECHNICAL CONSULTANTS, LLC**

Tony Petrowski  
Project Engineer  
[Anthony.Petrowski@oneatlas.com](mailto:Anthony.Petrowski@oneatlas.com)

Fred R. DeLeon Jr., P.G., C.P.G., P.E., D.GE  
Principal, Engineering & Environmental  
[Fred.DeLeon@oneatlas.com](mailto:Fred.DeLeon@oneatlas.com)

